

SENASYS

INSTALLATION

HIGH TEMPERATURE LIMIT CONTROL (TC)

The Columbus Electric TC Series FIRESTAT is a push-button manual reset limit control designed expressly for prevention of fire in warm air ducts. It may be used with gas, oil, or electric forced warm air heating systems.

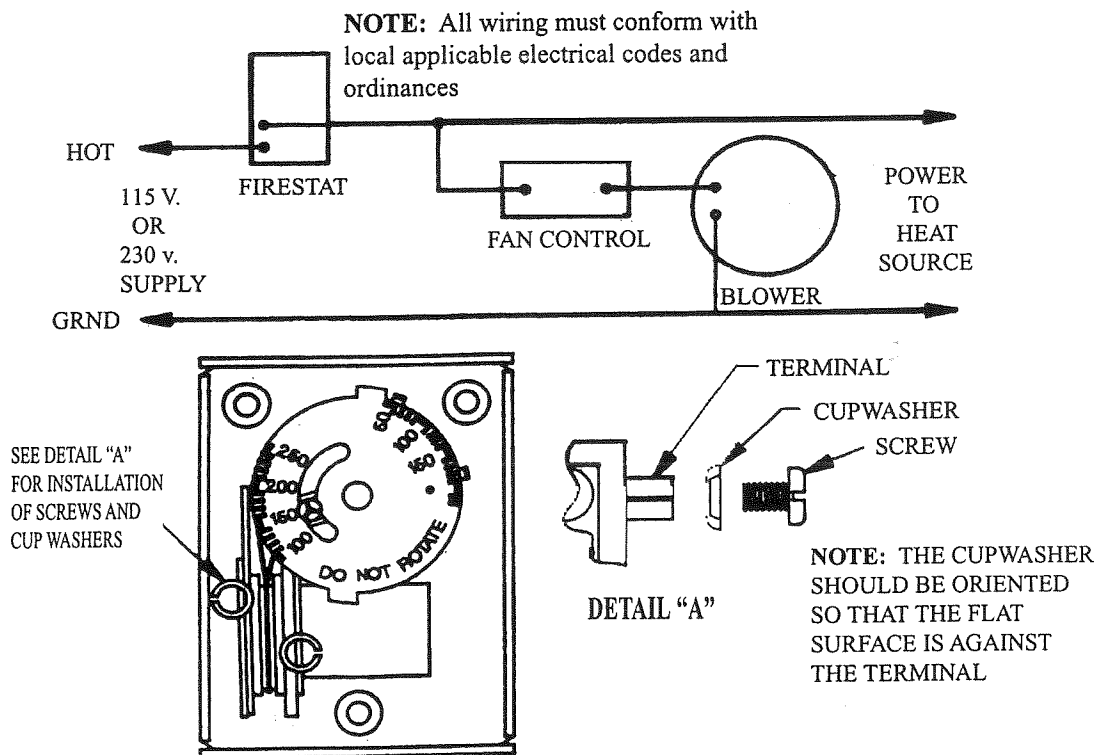
One or more FIRESTATS should be installed in duct work at critical temperature locations such as downstream from electric heaters, points where duct work is in close proximity to flammable materials, etc.

FIRESTATS may be used in low voltage or line voltage circuits and are usually wired to open circuit to both heat source and blower when duct air temperature exceeds the temperature setting. If more than one FIRESTAT is connected to control a single heat source, the FIRESTATS must be connected in series. A typical wiring diagram is shown below.

SPECIFICATIONS

Electrical Rating:	9.8 AMPS FLA 58.8 LRA @ 115 VAC	Dimensions:	4.125" x 2.75" x 1.25"
	4.9 AMPS FLA 29.4 LRA @ 230 VAC	Model:	TC-105 - 5" element length
Differential:	25° F		TC-108 - 7 1/2" element length
Approvals:	UL Listed		TC-100 - 11" element length

INSTALLATION



704 Bartlett Ave. Altoona, WI 54720 715-831-6353